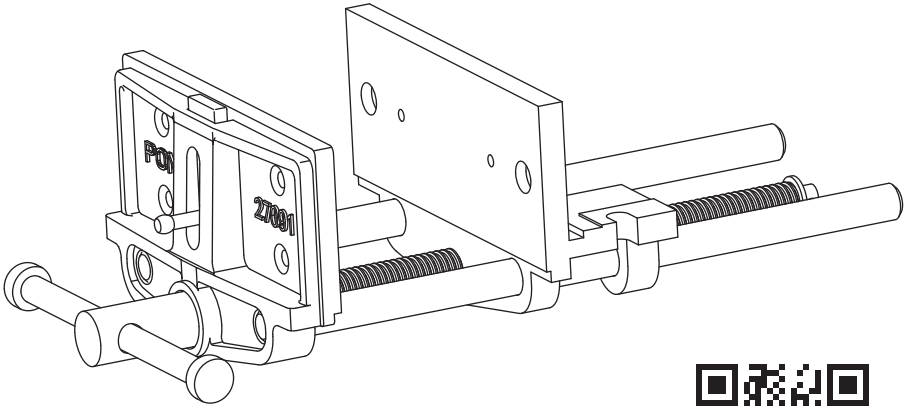


PONY®

#27091

4" X 7" MEDIUM DUTY WOODWORKER'S VISE



SCAN TO VIEW VIDEO
SAISIR L'IMAGE POUR
VISIONNER LA VIDÉO
ESCANEAR PARA VER VIDEO

OWNER'S GUIDE

PONY | JORGENSEN

Saddle Brook, NJ 07663 USA

ponyjorgensen.com



Made in China | Fabriqué en Chine | Hecho en China



Rev 2/2023

IMPORTANT SAFETY INSTRUCTIONS

Misuse of vise can cause serious injury to eyes, hands, limbs, etc.

- To ensure safety, vise must be set up and used properly.
- Before setting up and using, read, understand, and follow all instructions as outlined below.

When setting up vise:

- Make sure the bench top is properly secured.
- Use proper size bolts, nuts, lock and flat washers, in all base mounting holes. Never weld base of vise to any metal object.
- Only hand-tighten swivel base lock down nuts at the sides of the vise.
- Never use a pipe extension to tighten lock nut handles; this can cause the handles to bend and overstress the lock down bolts.

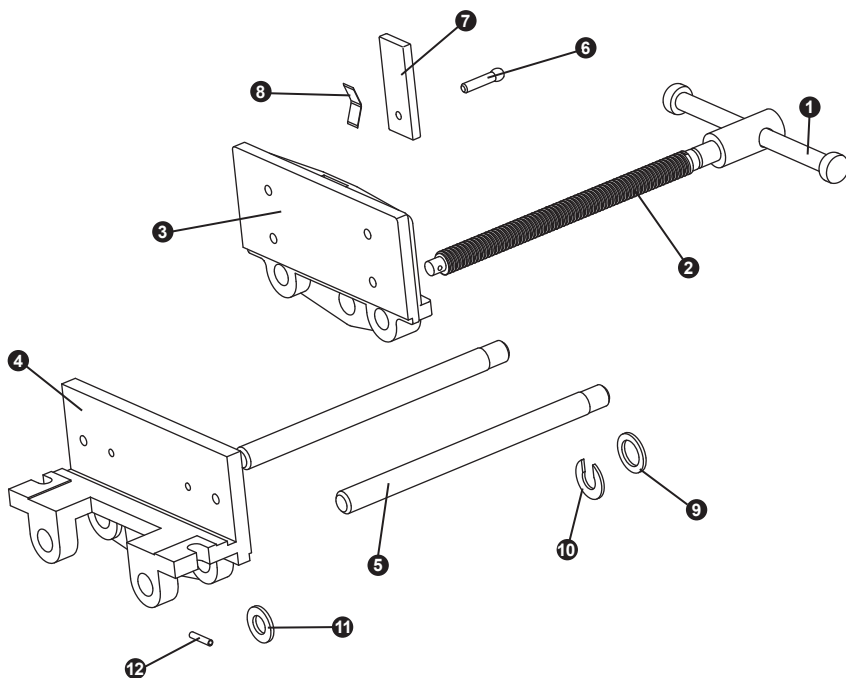
When using vise:

- Always use a vise of proper size and capacity to hold your specific work object.
- Never use a hammer, pipe extension or cheater bar on the spindle handle of vise.
- Never unscrew moveable jaw beyond the maximum specified opening of the vise.
- Never use vise as a press for assembly or disassembly of objects.
- Always wear eye and face protection when striking vise-held objects or when using power tools with a vise.
- Do not wear loose clothing or jewelry while operating vise as they can become caught in moving parts. Always wear restrictive hair covering and anti slip footwear while operating vise.
- **NOTE:** The spindle handle has been engineered to bend if excessive clamping pressure is applied, to prevent potential damage to vise.

SPECIFICATIONS

Model	Jaw Width	Jaw Opening	Throat Depth	Pipe Jaw Capacity	Weight
27091	7in.	8in.	3in.	N.A.	5.44kg/12lbs.

PARTS LIST



No.	Description	Quantity
1	Handle	1
2	Vise Screw	1
3	Movable Jaw	1
4	Fixed Jaw	1
5	Guide Bar	2
6	Finger Bolt	1

No.	Description	Quantity
7	Vise Dog	1
8	Spring	1
9	Washer	1
10	Circlip	1
11	Washer	1
12	Roll Pin	1

MOUNTING INSTRUCTIONS

1. With the help of another person or you can use some other bar clamps, hold the vise up against the workbench in the desired mounting location.

NOTE: If the workbench is less than 2-5/16" thick, use a piece of scrap wood between the vise and workbench as a shim. Cut the shim to the necessary thickness to keep the top of vise flush with the top of the workbench after mounting.

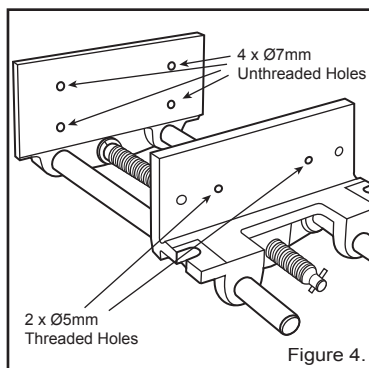
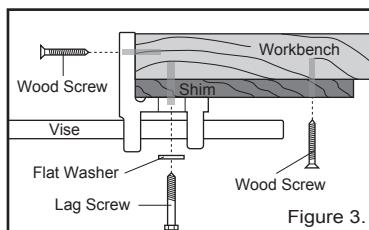
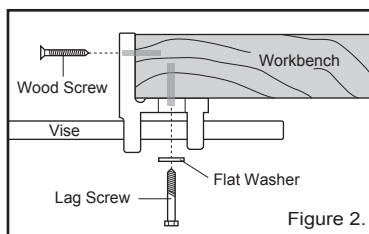
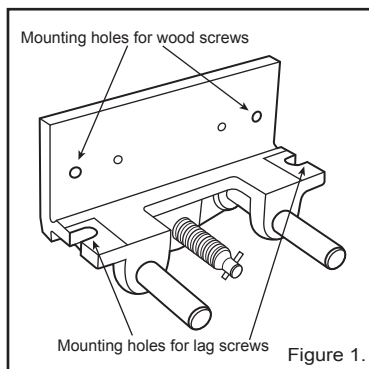
2. Use a pencil to mark the workbench through the four vise mounting holes (Figure x) so you know where to drill pilot holes in the workbench.
3. Use a 1/4" drill bit to drill pilot holes approximately 1-1/2" deep in the underside of the workbench for the two lag screws.
4. Use a 1/8" drill bit to drill pilot holes into the edge of workbench for the two wood screws.
5. Mount the vise to the workbench with two lag screws (5/16" x 1-3/4" Lag screw and 5/16" Washer) through the underside of the workbench, as shown in Figure x.

NOTE: If you are using a shim make sure that the lag screws go completely through the shim and secure at least halfway into the workbench thickness. Also, for added holding strength, attach the shim directly to the workbench with wood screws that are independent of the vise, as shown in Figure x.

6. Using two wood screws (#6 x 1mm x 2") mount the vise to the workbench through the edge of the workbench.

NOTE:

1. Mounting Hardware not included
2. Holes are pre-drilled in the jaw faces to attach wood jaw pads.



OPERATING INSTRUCTIONS

1. Rotating the vise handle clockwise moves the movable jaw toward the fixed jaw.
2. Rotating the vise handle counterclockwise moves the movable jaw away from the fixed jaw.
3. Tighten/loosen the bench dog finger screw to adjust the height of the bench dog.

MAINTENANCE

- Give the vise a quick wipe down after each use to make sure it's dry and clean.
- Keep machined surfaces and all moving parts clean and free of dirt, chips and foreign materials.
- Apply dry graphite or silicon based lubricant to the lead screw to keep it operating smoothly and prevents any sawdust from building up in the threads.
- If saw dust does build up on the vise threads, use a blade or bit cleaner to remove the built up dust.
- Periodically check that the mounting bolts have not loosened. Tighten as necessary.

WARRANTY

3 YEAR LIMITED WARRANTY: This product is warranted to the original purchaser to be free from defects in material and workmanship for three years from the date of purchase.

Pony | Jorgensen will repair or replace, **FREE OF CHARGE**, during the warranty period, any product that proves to be defective in material or workmanship under normal use. If repair is not practical, Pony | Jorgensen may elect to replace the product or refund the purchase price in exchange for return of the defective product. Please contact Pony | Jorgensen by calling 1-800-776-2228 or contact marketing@ponyjorgensen.com.

 **WARNING:** Cancer and Reproductive Harm - www.P65Warnings.ca.gov.

PONY | JORGENSEN

Saddle Brook, NJ 07663 USA

ponyjorgensen.com



PATENTS PENDING